

Codefuse Product Datasheet

Codefuse offers a cloud based automated website, desktop and API software testing service. With Codefuse's Software as a Service (SaaS) you can define and execute your tests entirely in the cloud. Further, tests can be run in the cloud across hundreds of browser and operating system combinations. Codefuse is also designed to promote collaboration between analyst and tester, simplify testing, regression testing and support quality assurance (QA) processes.

Business benefits

- ✦ Define & Execute tests entirely in the cloud
- ✦ Supports 100's of browser / OS combos
- ✦ Significantly reduces setup time and costs
- ✦ Supports behaviour & test driven development
- ✦ Keyword driven, no scripting skills needed
- ✦ Significantly reduce local hardware needs
- ✦ Promotes tester / analyst collaboration

Codefuse Components:

- ✦ Codefuse Management Console
- ✦ Codefuse Spy
- ✦ Codefuse Agent

Codefuse Management Console

The Codefuse Management Console is hosted in the cloud and is accessible via a standard web browser, it features a zero client footprint.

It is the place for you to define your testing & QA requirements within a Codefuse project.

The console also offers an intuitive easy to use UI for creating and executing your website, software, QA and regression tests online.

Via the console you can view your test results including screen and video captures of the tests executed.

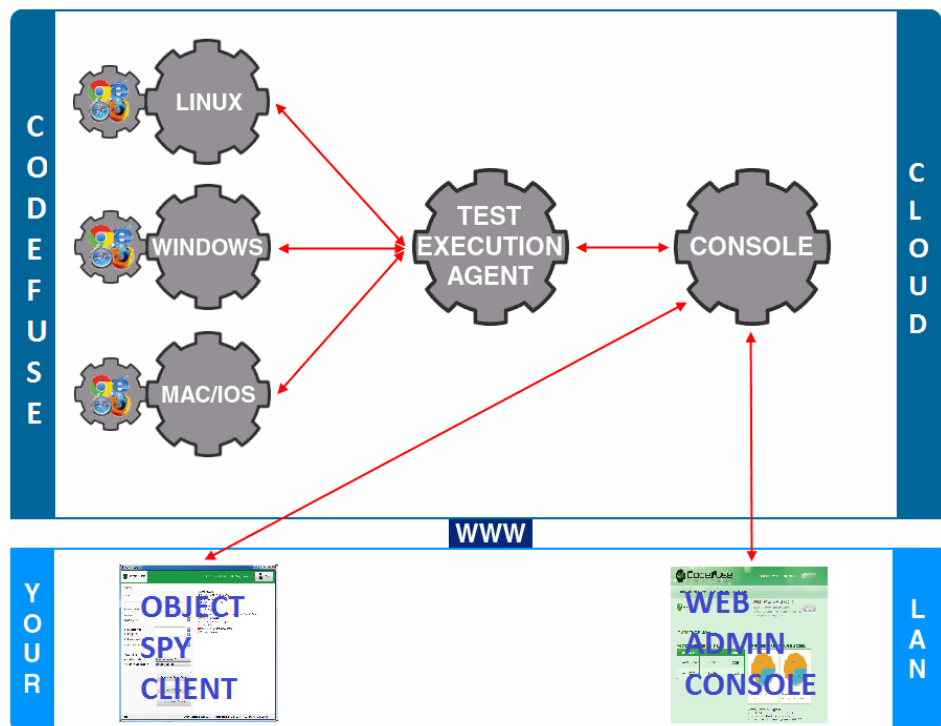


Figure 1: Codefuse Cloud Based Test Automation Architecture

The console also maintains comprehensive test management data particularly for those objects that have been marked as having issues.

Codefuse Agent

The Agent is the engine that executes your tests. You can execute your tests locally or in the cloud using the unique power of Codefuse. The Agent will execute the test steps as defined by you in the Management Console. The Agent will generate pass / fail criteria for each test step entered and screenshots / video which are viewed via the Console application.

Codefuse Spy

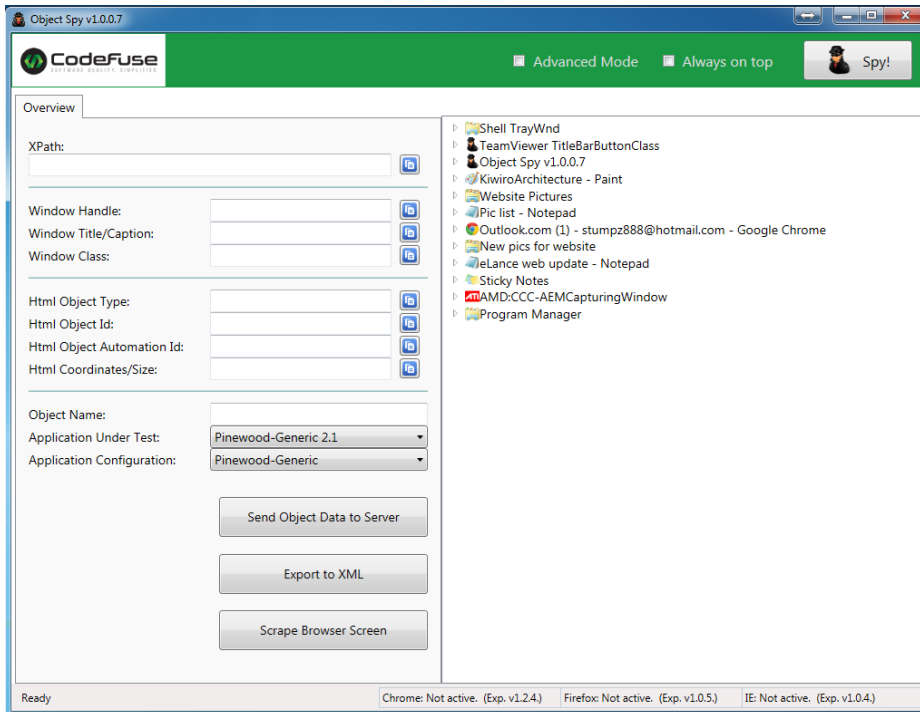


Figure 2: The Codefuse Spy Admin User Interface

Codefuse Spy is a downloadable component of the Codefuse suite.

It communicates directly with the Management Console and is used to extract detailed information about your target test objects.

It can extract information in a number of ways including screen scraping the entire user interface or via user driven input.

Codefuse Spy, like the management console, offers an intuitive and easy to use interface for efficient test process management..

Technical flexibility

Codefuse supports more than one hundred browser and platform combinations making it one of the most flexible test management environments available today.

Flexible test execution model

Codefuse allows users to execute tests in a number of ways:

- ▲ Entirely in the cloud. Make use of our cloud agents and Sauce Labs execution environment.
- ▲ Local-to-cloud. Install your own agent, but execute in Sauce Labs execution environment.

About Codefuse Technology Limited

Codefuse Technology produces tools for the software development industry.

We are focussed on improving the quality of your software by enhancing your collaboration, simplifying your processes and streamlining your QA efforts through automation.

We provide cloud based Software-as-a-Service (SaaS) solutions which are designed to minimise your efforts in set-up and maintenance so that you can concentrate on getting the job done. We were established in 2013 as Codefuse Technology Limited.

Software Quality. Simplified.

Contacting Codefuse

Codefuse Technology Limited
145-157 St John Street, London,
EC1V 4PW

Tel: 0207 873 2431

General: info@codefuse.io
Support: support@codefuse.io
Sales: sales@codefuse.io